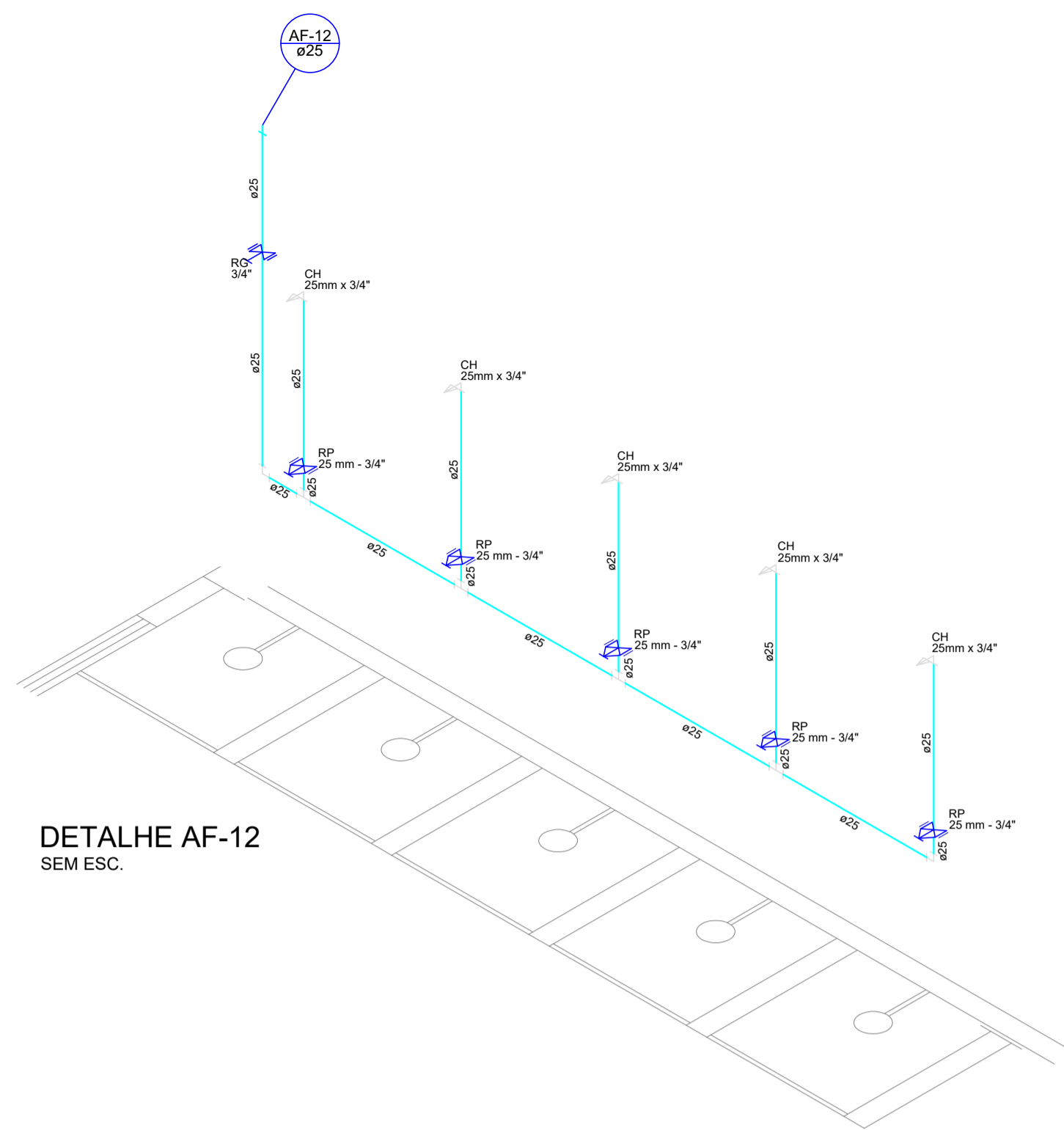
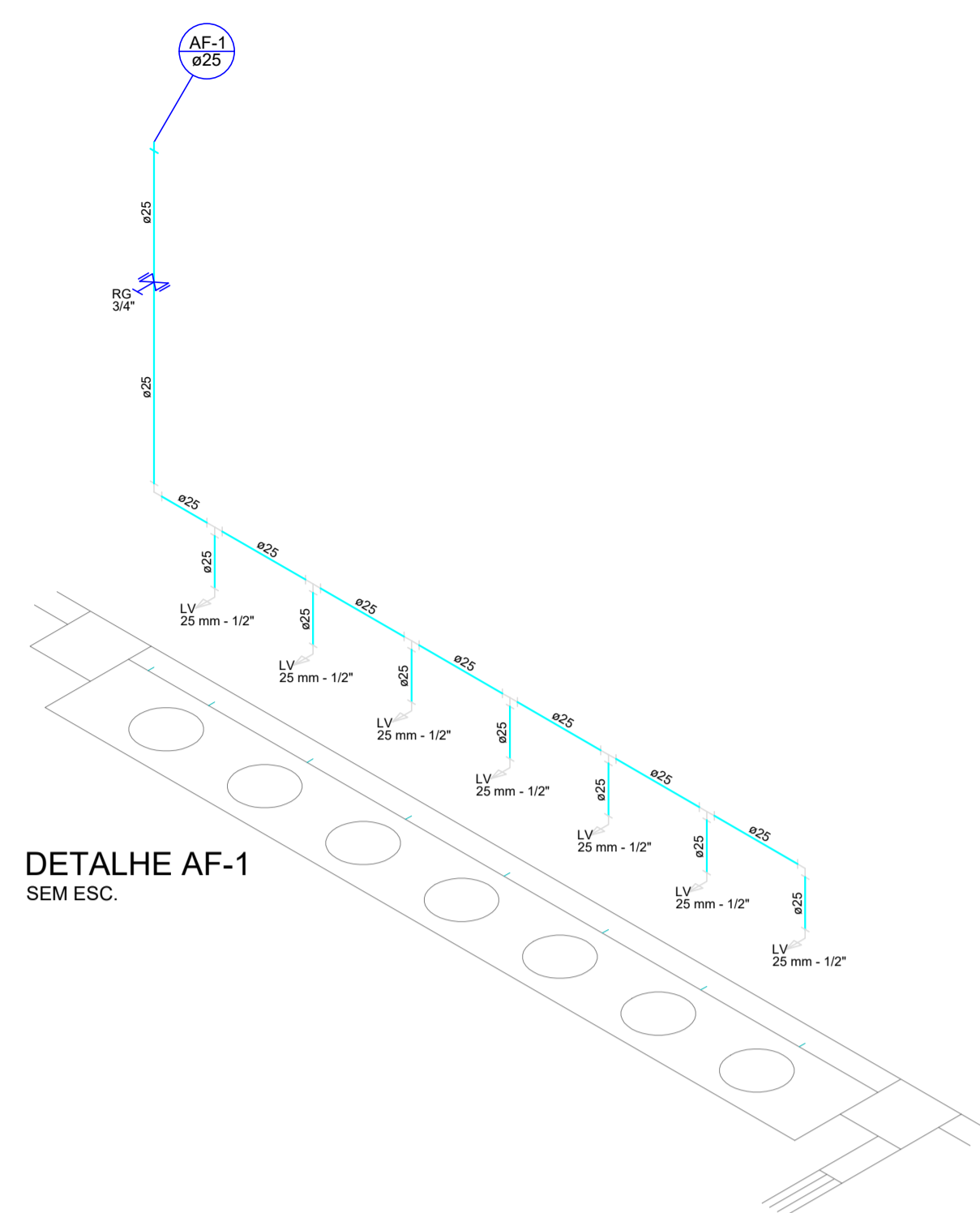


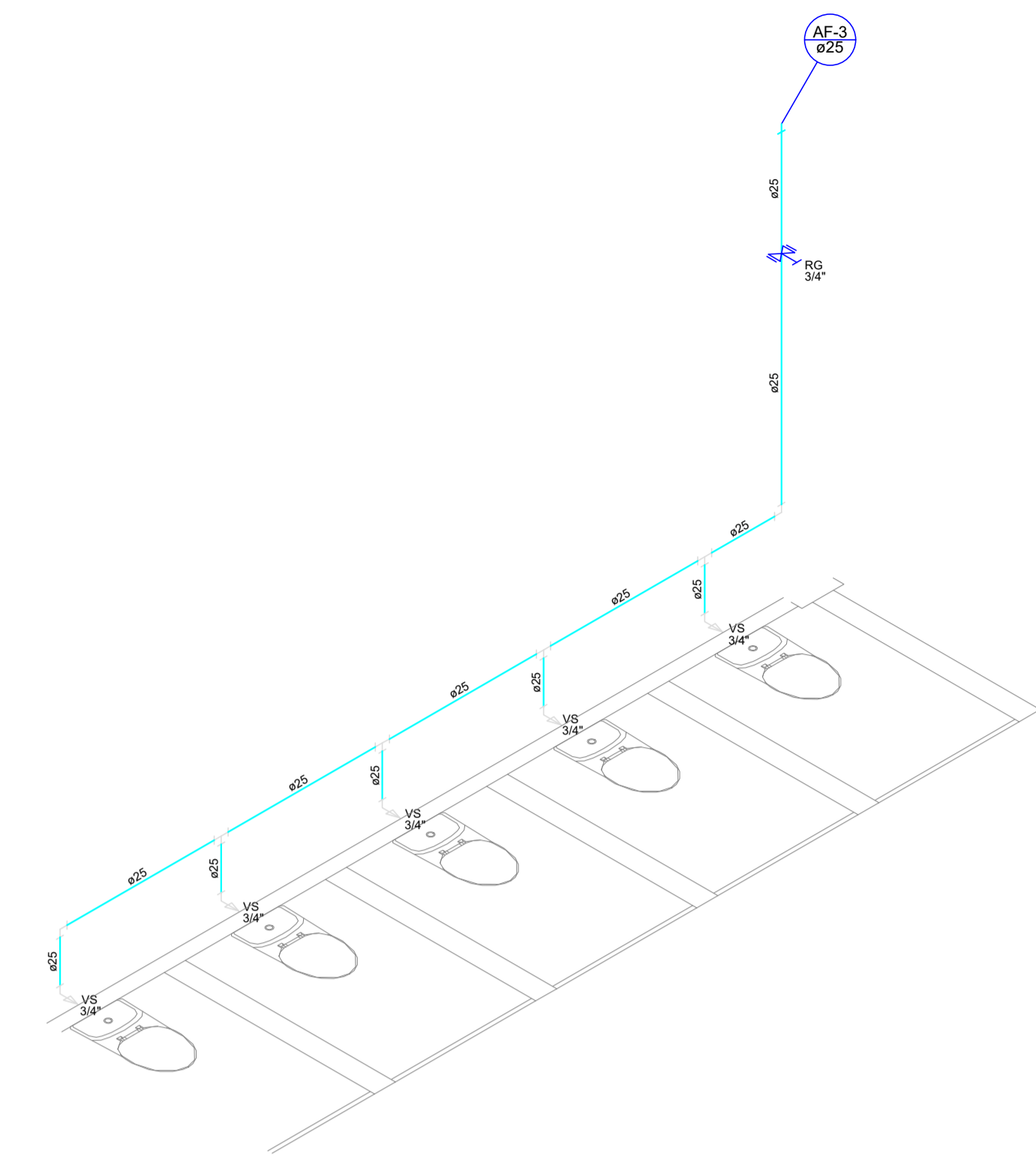
DETALHE AF-11
SEM ESC.



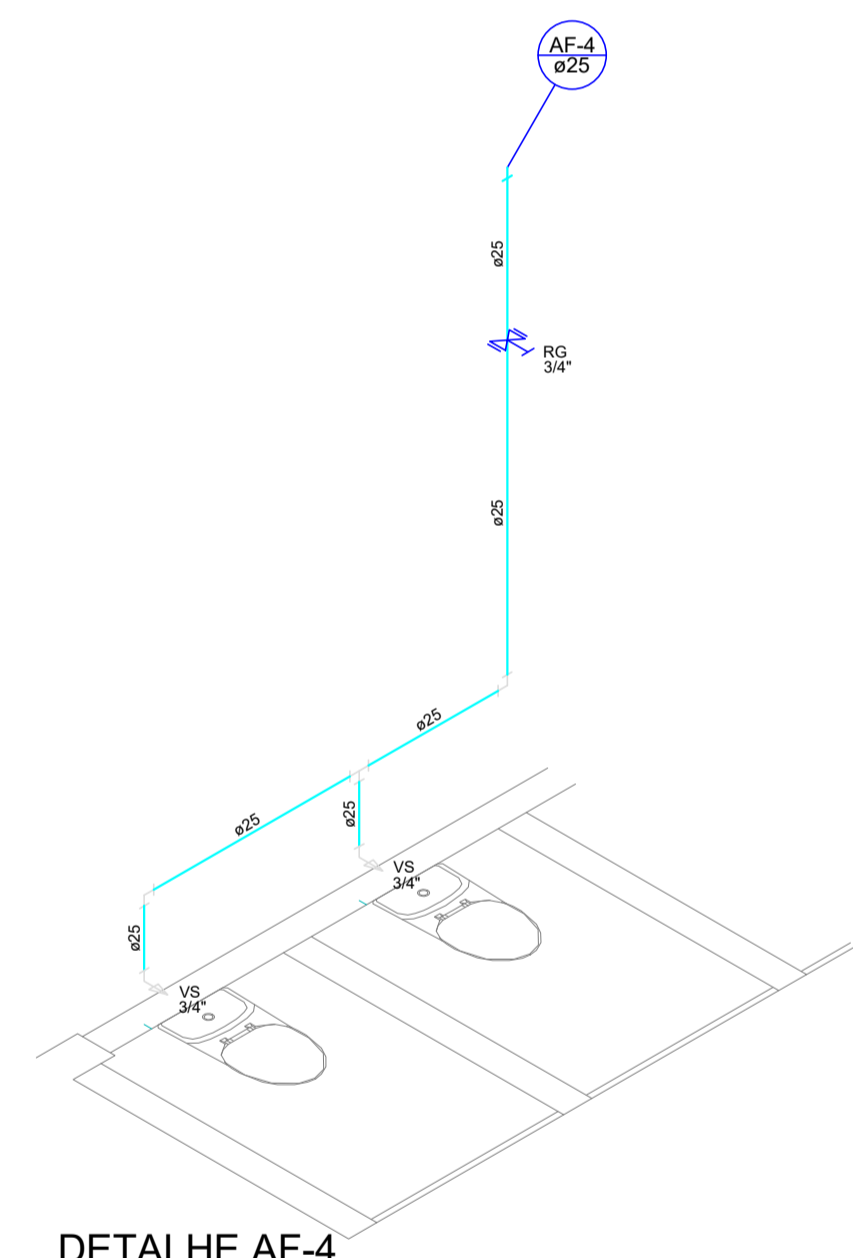
DETALHE AF-12
SEM ESC.



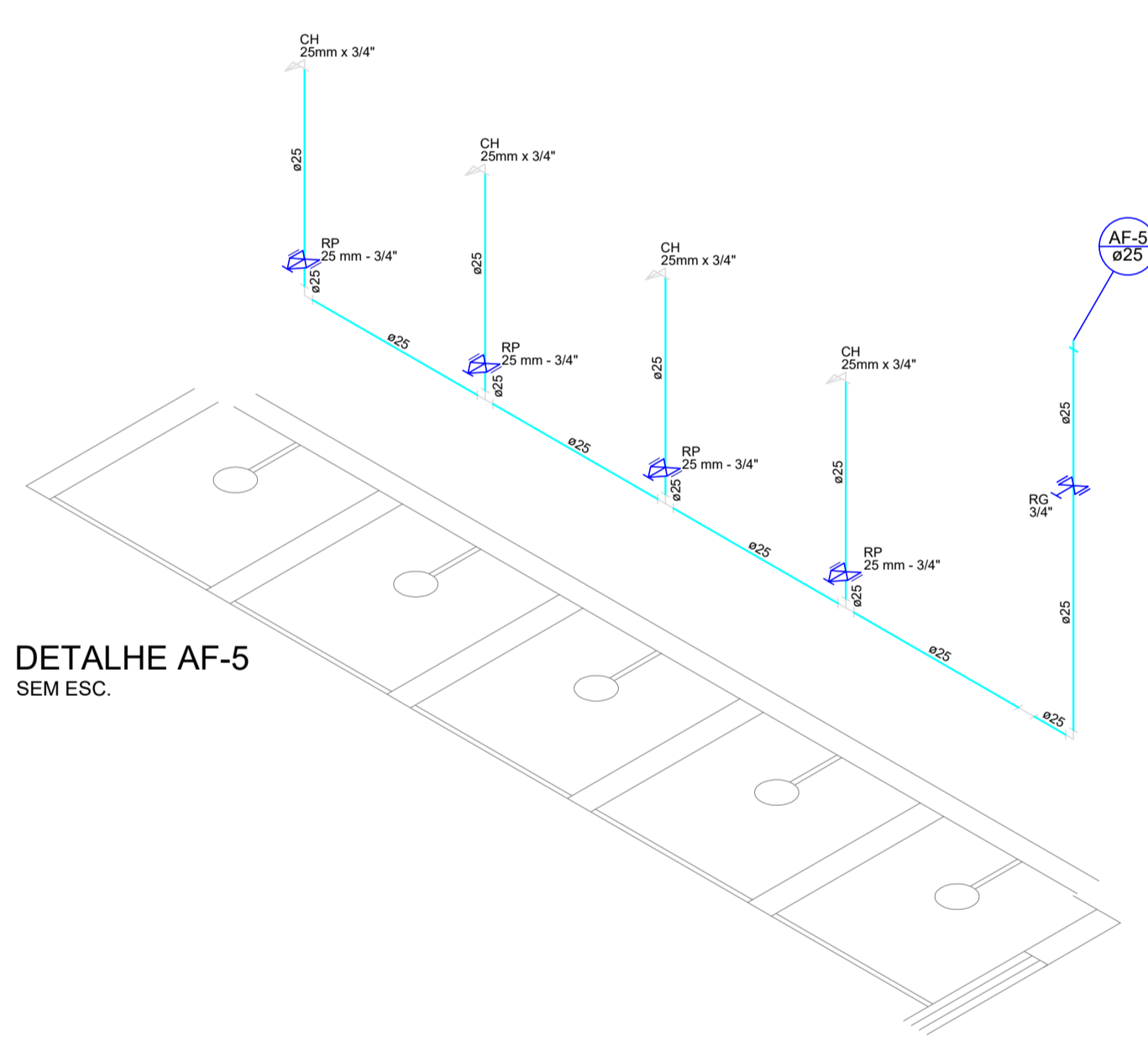
DETALHE AF-1
SEM ESC.



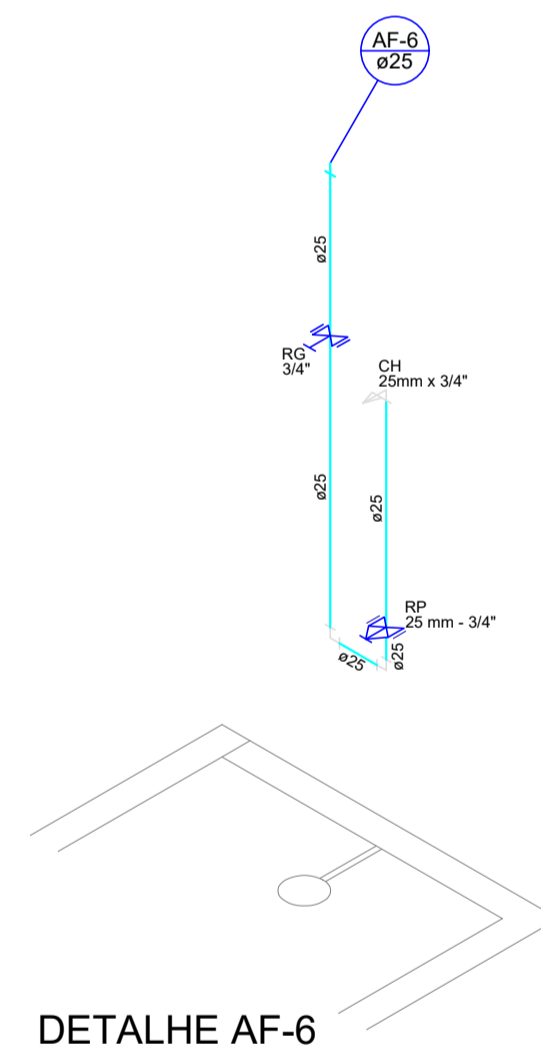
DETALHE AF-3
SEM ESC.



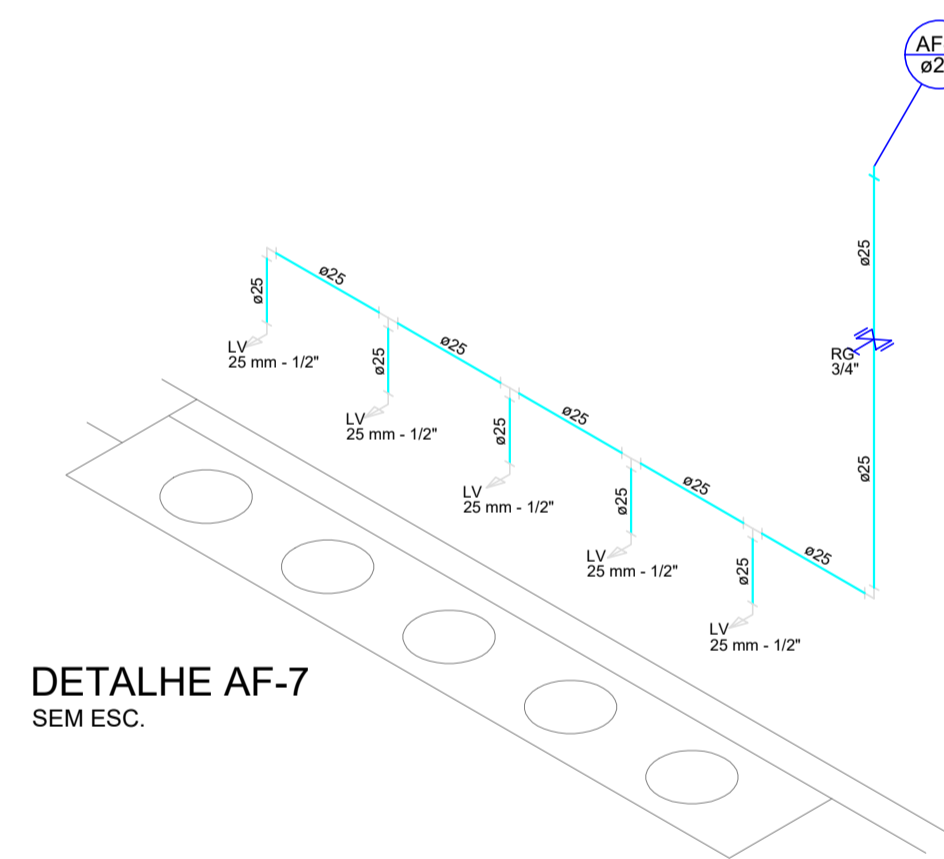
DETALHE AF-4
SEM ESC.



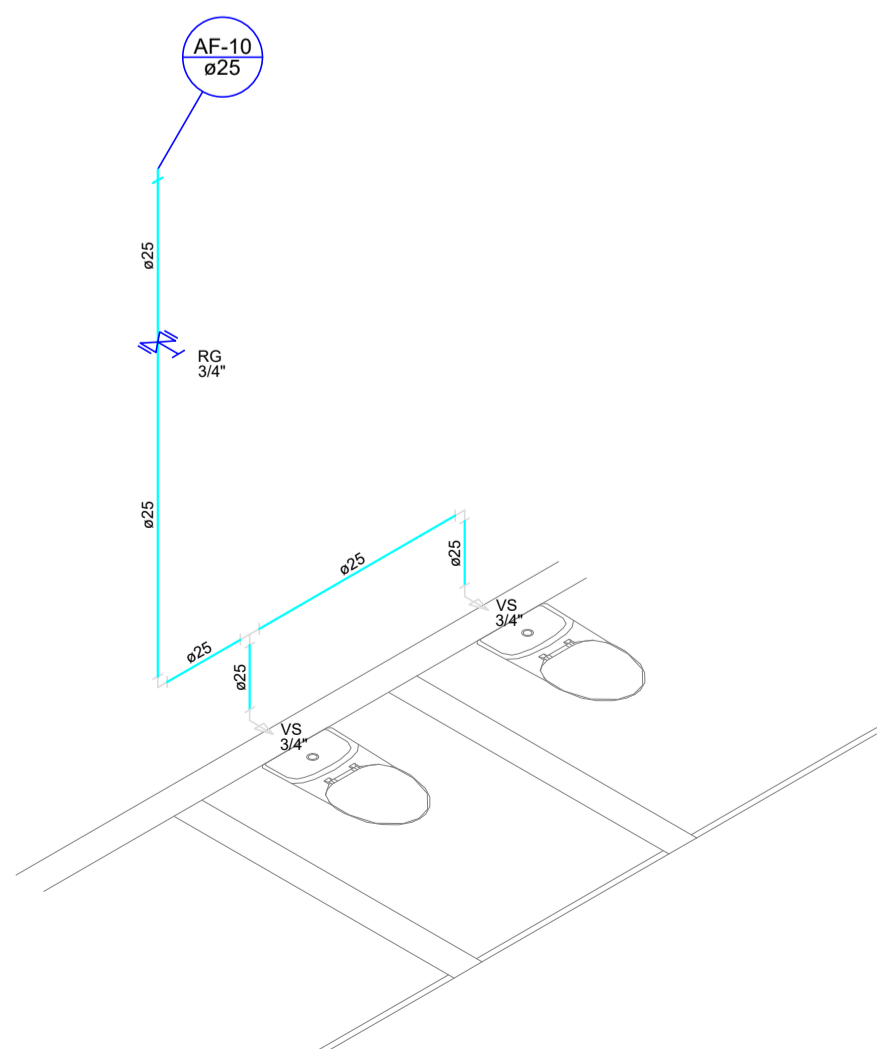
DETALHE AF-5
SEM ESC.



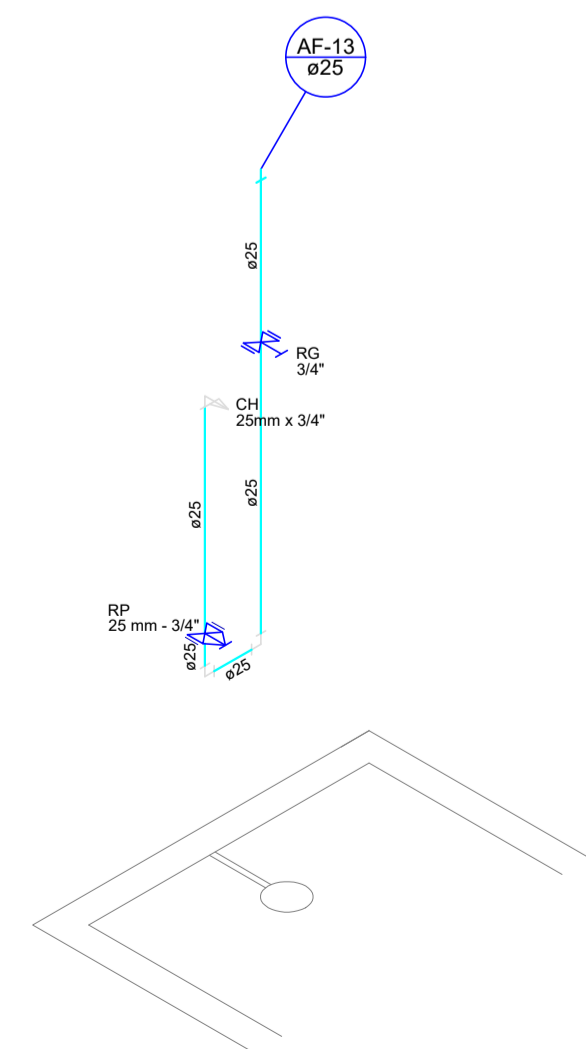
DETALHE AF-6
SEM ESC.



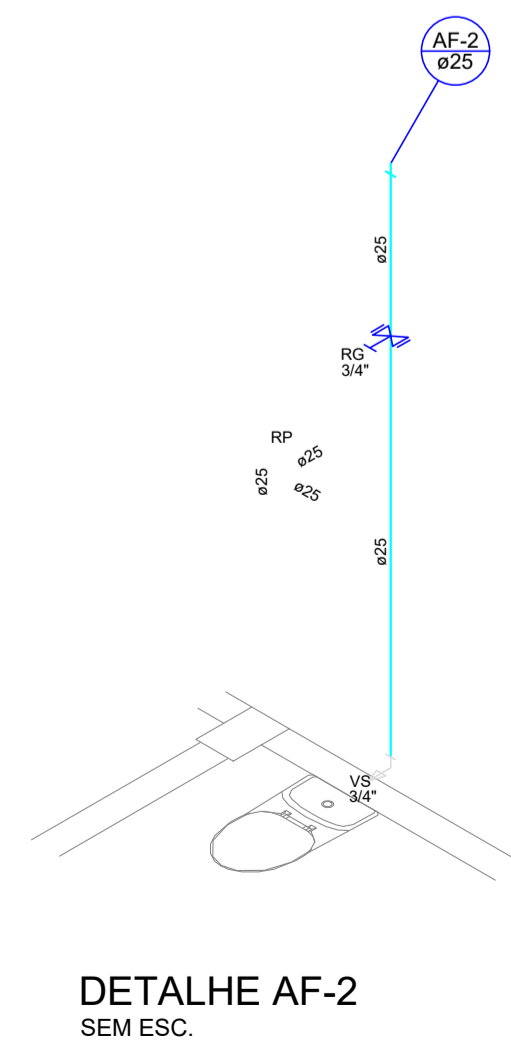
DETALHE AF-7
SEM ESC.



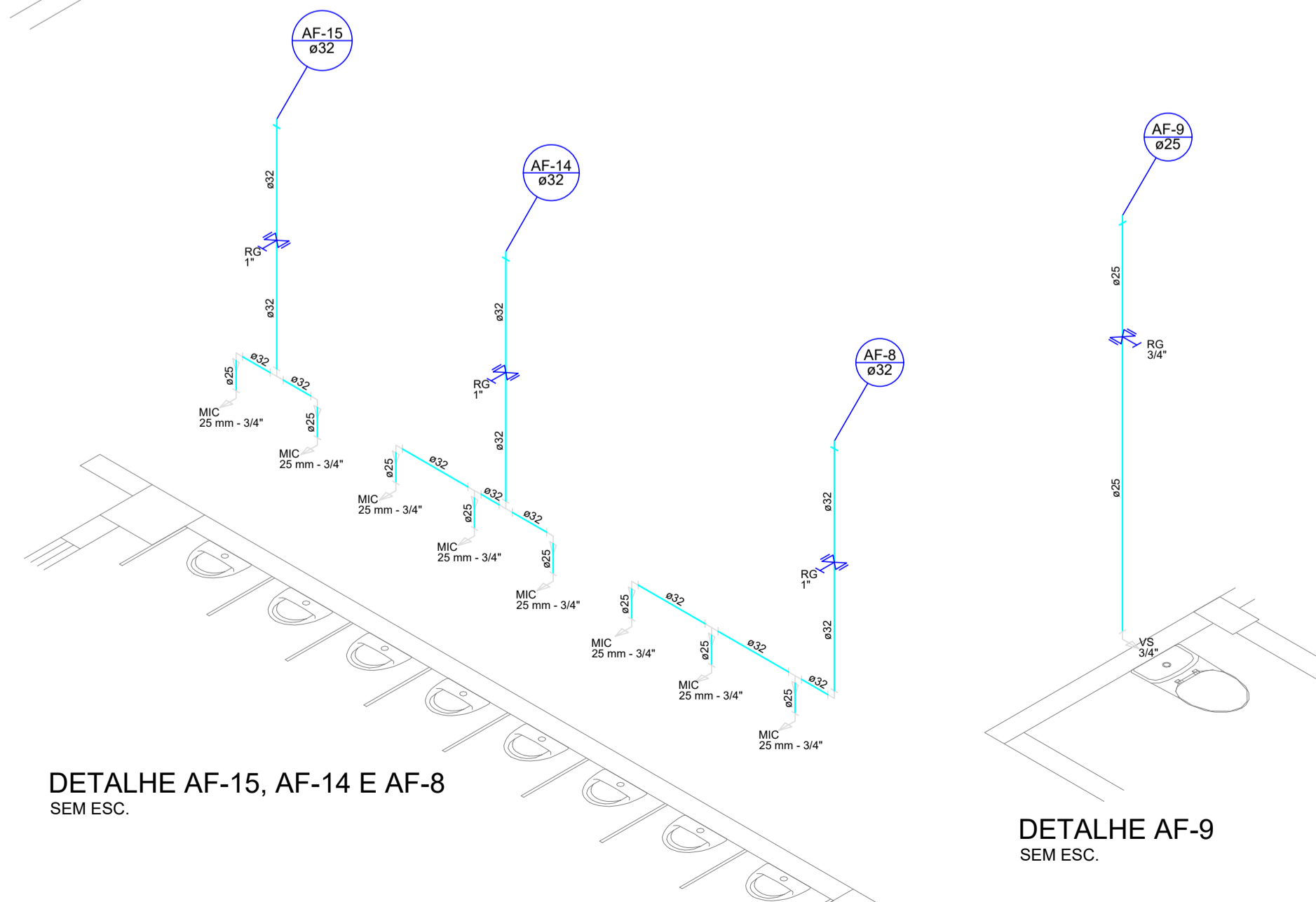
DETALHE AF-10
SEM ESC.



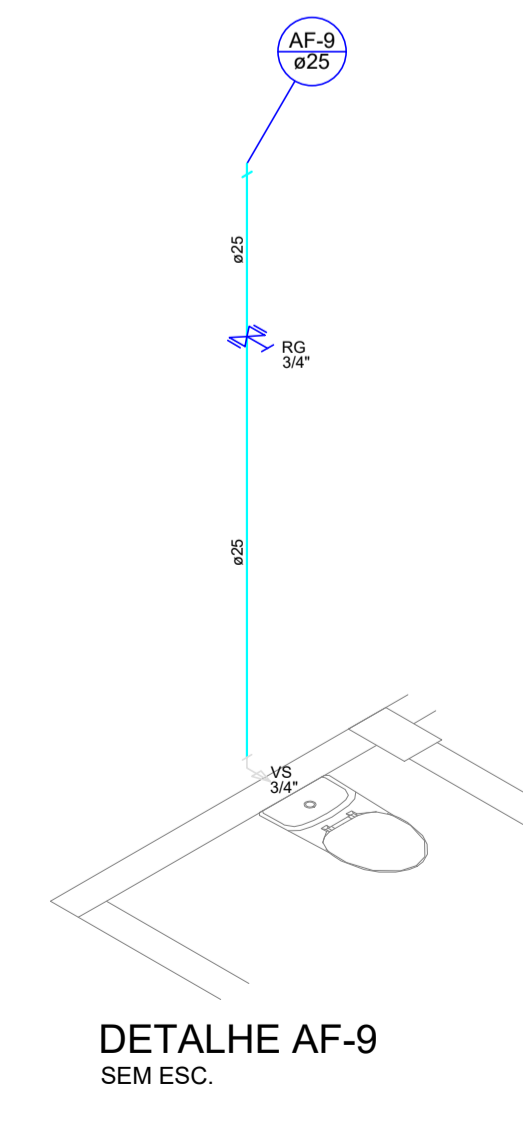
DETALHE AF-13
SEM ESC.




DETALHE AF-2
SEM ESC.



DETALHE AF-15, AF-14 e AF-8
SEM ESC.



DETALHE AF-9
SEM ESC.

 ARQUITETURA E ENGENHARIA > PROJETOS INDUSTRIAIS / COMERCIAIS / RESIDENCIAIS E PUBLICAS > ASSISTENCIA / CONSULTORIA > GESTÃO DE OBRAS > PERICIAS > EXECUÇÃO DE OBRAS		AV. BRASIL, 1225 - SALA 03 UNIVERSITARIO CEP 8809-917 - LAGES/SC TEL: (51) 99923.2344 CNPJ 20.270.419/0001-60		05
RESP. TÈC.: <u>Eng. James André Clauberg</u> CREA - 45.160-6		OBRA : GINÁSIO DE ESPORTES		
CLIENTE: <u>Prefeitura Municipal de Cerro Negro</u> CNPJ 95.991.097/0001-58		PROJETO HIDRÁULICO ISOMÉTRICOS		
DESENHO : Eng. James André Clauberg	ÁREA CONSTRUÍDA : 1.318,27m²	ESCALA: Indicada	DATA : 01/2022	